

Kodak RVG 5100

Digital Radiography System

The Kodak RVG 5100 digital radiography system lets you capture and analyze high quality dental radiographs quickly and easily. Its exceptional ease of use and value for the money makes it an ideal solution to discover digital radiography, even for first-time users. Like all Kodak dental systems, the RVG 5100 system is designed to give you superior results, backed by Kodak's expert support team.

Digital speed. Fast, confident diagnoses.

More practical. More comfortable. More reliable.

Kodak strives for excellence, providing innovative products enhanced by customer feedback, resulting in superior products tailored to meet your needs. With the new sensor design, positioning is easier and more accurate. The rounded corners of the sensor are more comfortable for patients, and the new cable attachment helps ensure complete reliability.

Sophisticated. Yet simple.

As easy to use as it is to master, the RVG 5100 system will help you make your diagnosis quickly and easily. The sensor remote control allows for convenient chairside image capture so you can stay focused on your patients. A complete set of positioners helps make proper sensor placement faster. The RVG 5100 system gives you everything you need by way of a gentle introduction to digital radiography.

Kodak quality. Value for money.

With a 14 lp/mm true image resolution, the RVG 5100 system delivers high quality radiographs and provides great value for the money. It gives you the high definition you need to make confident diagnoses quickly. With the USB 2 technology, your radiographs are displayed in less than 2 seconds, minimizing the waiting time.



Designed to make your life easier.

Technology you can rely on.

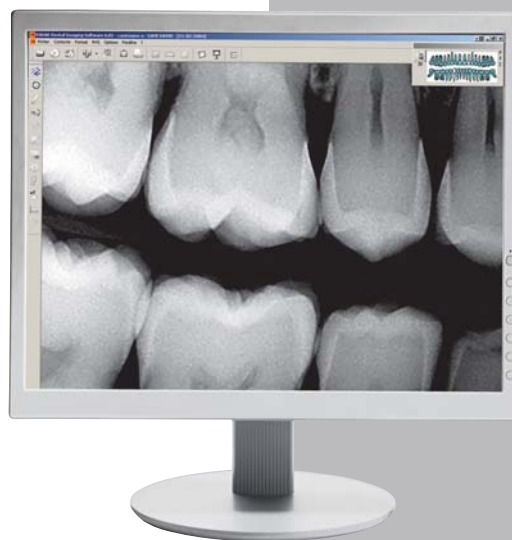
The technology behind the RVG 5100 system is the result of decades of experience in digital radiography systems engineering. Kodak's sensor technology with optical fiber yields high image resolution to help you make confident diagnoses every time. The technology also provides greater exposure latitude to help you capture the right image the first time.

Simple sophistication. Complete integration.

Simple, efficient and intuitive, Kodak dental imaging software provides all the tools to manipulate, print and easily archive your images. What's more, you will be able to integrate other Kodak dental imaging systems and solutions and therefore minimize the learning curve for your staff. Also, images integrate easily into your practice management software.

Count on Kodak for ongoing support and guidance.

At Kodak, we're committed to providing the ongoing guidance and support you need to get the most out of your imaging system. A wide network of authorized distributors and Kodak experts are ready to answer your questions. They're prepared to help you capture the highest quality radiographs from day one — and maximize your return on investment.



TECHNICAL SPECIFICATIONS

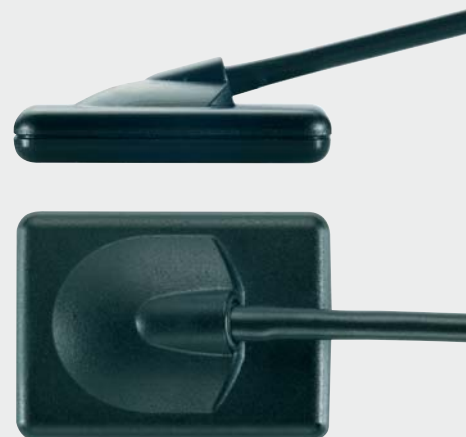
- True image resolution: 14 lp/mm
- Theoretical sensor resolution: 27.03 lp/mm
- Kodak sensor technology with optical fiber
- Connection: USB 2 – high speed

Size 1 sensor: all-purpose sensor providing the best compromise between ease of use and active area.

- Outside dimensions: 27.5 x 37.7 mm
- Dimensions of active area: 22 x 30 mm
- Matrix dimension: 1200 x 1600

Size 2 sensor: Designed with a larger surface - active area is 60% greater than size 1 sensor for Bite Wing images.

- Outside dimensions: 32.2 x 44.1 mm
- Dimensions of active area: 27 x 36 mm
- Number of pixels: 1440 x 1920



© Eastman Kodak Company 2006.
Kodak and RVG are trademarks
of Eastman Kodak Company.

KODAK INFOLINE
Free phone – United Kingdom: 0800 89 51 13 - Ireland: 1800 55 49 97
Denmark: 800 171 49 - Norway: 800 11 167
Other countries: +49 (711) 406-3910 - Greece: (01) 689 8620
or visit: www.kodak.com/dental